

Quick Guide



DEEPFLY DF9

QUICK GUIDE

www.deepfly.kr

Using the PC Viewer (Windows)

- The following provides brief information about the PC VIEWER screen layout.



- ① Front/rear video playback screen
- ② Video controller
- ③ Speed indicator
- ④ G-sensor information
- ⑤ Recording file list
- ⑥ Map
- ⑦ Full-screen
(Switch screens (Front / Rear))
- ⑧ Dashcam settings
Save the current video
- ⑨ Change language

Using the PC Viewer (MAC)

- The following provides brief information about the PC VIEWER screen layout.



① Front/rear video playback screen

② Video controller

③ Speed indicator

④ G-sensor information

⑤ Recording file list

⑥ Map

⑦ Full-screen
(Switch screens (Front / Rear))

⑧ Dashcam settings

⑨ Save the current video

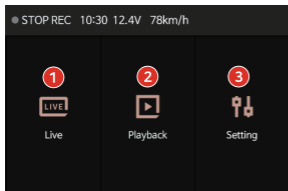
LCD



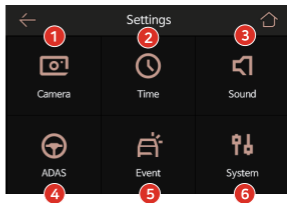
Live View



ADAS



Main Menu



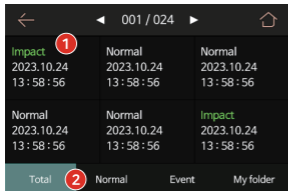
Setting

Live View	① Video Recording On/Off ② Voice Recording On/Off
	③ Voice Guidance On/Off ④ Parking Recording On/Off ⑤ Main Menu
ADAS	① ADAS(LDWS / FVDW / FCWS)
Main Menu	① Live ② Playback ③ Setting
Setting	① Camera setting ② Time setting ③ Sound setting ④ ADAS setting
	⑤ Event setting ⑥ System setting

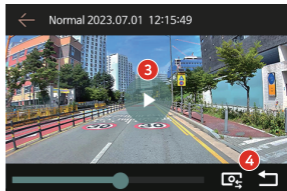
LCD

Video Recording

If you go to the [Main Menu] and select [Play back], then choose the recorded video list and select the desired video file, the video will be played.



Recorded video list



Play recorded video

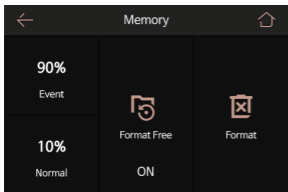
Recorded video list

① Video recording list ② Select recorded video type

Play recorded video

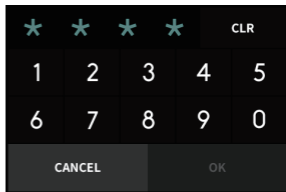
③ video play button ④ Front/rear/IR camera video switching

Memory



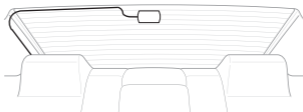
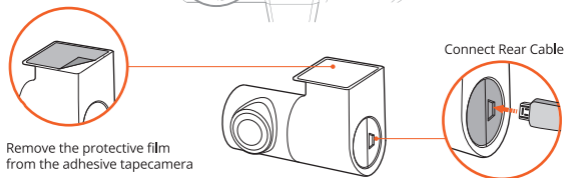
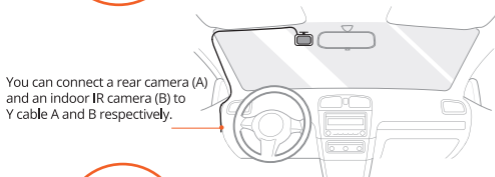
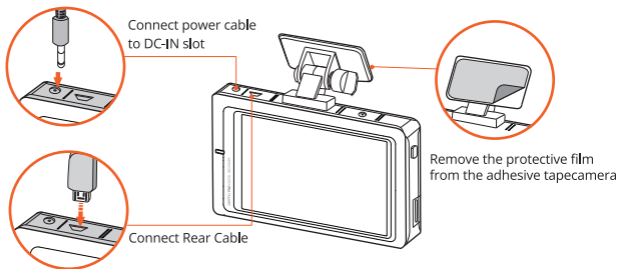
Manage storage memory ratio.

Secret Mode



Using the secret mode function You can protect recorded videos and prevent them from being deleted.

INSTALL



SPECIFICATIONS

SPECIFICATIONS

Product	Deepfly DF9	Camera	Front : 2.0M CMOS Sensor Rear : 2.0M CMOS Sensor
LCD	3.5" Touch LCD (IPS)		
Resolution	Front : FHD 1920x1080p, 30fps Rear : FHD 1920x1080p, 30fps	Angle	Front : 145° , Rear : 130°
		Video	H.264 / PCM
Power	DC 12V ~ 24V	ADAS	LDWS / FVDW / FCWS
Senear	3-Axis Accelerometer G-Sensor	GPS	External GPS
Audio	PCM(Pulse Code Modulation)	Capacity	Micro SD 32GB~256GB
Wi-Fi	External WiFi Doble(2.4GHz)	Temperature	Operation temp: -10° ~ 60°C
PC Viewer	Win7, 8,10 (32Bit / 64Bit) / MAC (OS X 10.7 64Bit) or higher		

PACKAGE CONTENTS



Front Camera



Rear Camera



Windshield Mounts



Micro SD Card



Hardwiring Cable



Rear Camera Cable



Quick Guide

Optional Components

External GPS Antenna / Cigar Jack Power Cable

Safety and Precaution

- Do not disassemble the product or subject the product to impact. Doing so may damage the product. Unauthorized disassembly of the product voids the product warranty.
- Do not operate the product while driving a vehicle. Distraction while driving may cause accidents and result in injury or death.
- Do not expose the product to direct sunlight or intense light. The lens or internal circuitry may fail permanent physical damages may result if it is operated or stored out of the specified temperature ranges. Such damages are not covered by the warranty.
- Do not remove SD card or turn off the power cable during the firmware update. It may cause malfunction or loss of data.
- Use of genuine DEEPLY memory card is recommended. Failure to use genuine SD card may cause error or malfunction.
- Real-time recording and playback via Wi-Fi could be delayed depending on the specifications of your smart device.
- Motion detection is initiated by an image sensor software. Errors may occur depending on the surrounding environment and the voltage of the car.
- If the GPS signal is good, ADAS will activate when the speed of the car is above the set speed. The surrounding environment may cause errors.
- Do not modify or cut the power cable. Also, do not place heavy objects on the power cable or pull, insert, or bend the power cable not using excessive force. Doing so may result in electrical fire or electrocution.
- Unauthorized connection of the power cable may cause malfunctions. Connections must be different depending on the power type of the vehicle. (Please contact a professional engineer if you need help to install it)