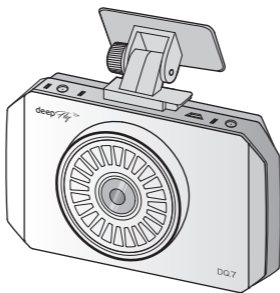


Quick Guide

deepFly 

DEEPFLY DQ7 QUICK GUIDE

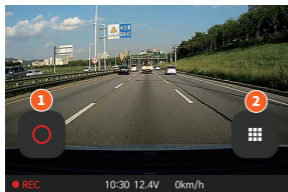


www.deepfly.kr

Safety and Precaution

- Do not disassemble the product or subject the product to impact. Doing so may damage the product. Unauthorized disassembly of the product voids the product warranty.
- Do not operate the product while driving a vehicle. Distraction while driving may cause accidents and result in injury or death.
- Do not expose the product to direct sunlight or intense light. The lens or internal circuitry may fail permanent physical damages may result if it is operated or stored out of the specified temperature ranges. Such damages are not covered by the warranty.
- Do not remove SD card or turn off the power cable during the firmware update. It may cause malfunction or loss of data.
- Use of genuine DEEPFLY memory card is recommended. Failure to use genuine SD card may cause error or malfunction.
- Real-time recording and playback via Wi-Fi could be delayed depending on the specifications of your smart device.
- Motion detection is initiated by an image sensor software. Errors may occur depending on the surrounding environment and the voltage of the car.
- If the GPS signal is good, ADAS will activate when the speed of the car is above the set speed. The surrounding environment may cause errors.
- Do not modify or cut the power cable. Also, do not place heavy objects on the power cable or pull, insert, or bend the power cable not using excessive force. Doing so may result in electrical fire or electrocution.
- Unauthorized connection of the power cable may cause malfunctions. Connections must be different depending on the power type of the vehicle. (Please contact a professional engineer if you need help to install it)

LCD



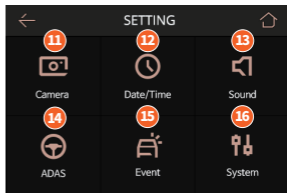
Live View



ADAS



Main Menu



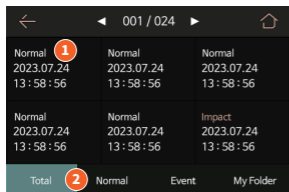
Setting

Live View	1 Manual Recording 2 Main menu
ADAS	3 ADAS(LDWS / FVDW / FCWS)
Main Menu	4 Live view 5 Play back 6 Setting
Quick Menu	7 WiFi ON/OFF 8 Volume control 9 Voice Recording ON/OFF 10 Parking Recording ON/OFF
Setting	11 Camera setting 11 Time setting 12 Sound setting 13 ADAS setting 14 Event setting 15 System setting

LCD

Video Recording

If you go to the [Main Menu] and select [Play back], then choose the recorded video list and select the desired video file, the video will be played.



Recorded video list



Play recorded video

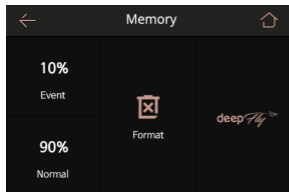
Recorded video list

1 Video recording list 2 Select recorded video type

Play recorded video

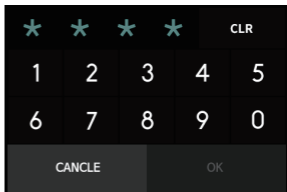
3 video play button 4 Front/rear/IR camera video switching

Memory



Manage storage memory ratio.

Secret Mode



Using the secret mode function
You can protect recorded videos and prevent them from being deleted.

DEEPLY CONNECTED APP

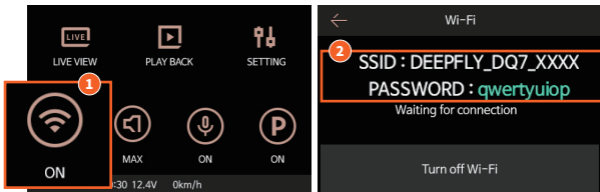


Please download the DeepFly Connected app from the Play Store or App Store.



Google Play

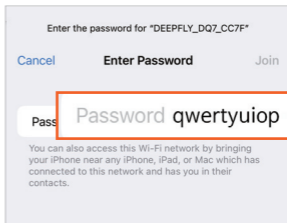
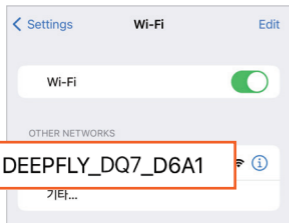
Step1. Enable the feature to WiFi



- 1 Press the WiFi button on the main menu screen of the dash cam to activate the WiFi feature.
- 2 Confirm the SSID and password.

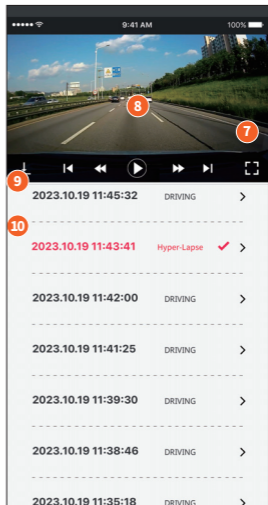
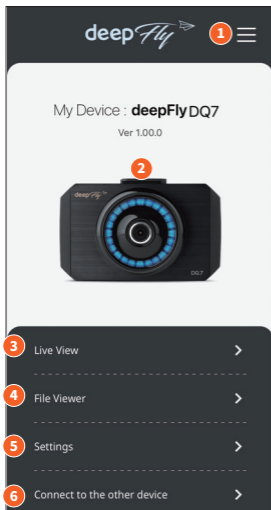
Step2. Connect smartphone

Select the SSID that starts with DEEPLY_DQ7_XXXX from the smartphone's WiFi settings menu, enter the password, and connect to the device. (Password: qwertyuiop)



DEEPFLY CONNECTED APP

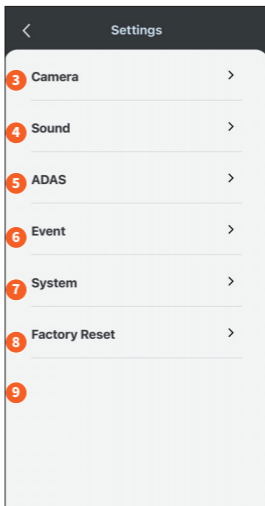
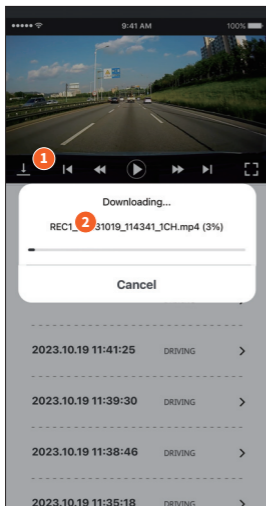
⚠ The app interface may vary slightly depending on the updated version.



Home	1 Menu 2 My device 3 Live view 4 File viewer
	5 Setting 6 Connect to the other device
PLAYBACK	7 Camera selection (channel switching) 8 Recorded videos
	9 Playback bar (play, full screen, video download)
	10 List of recorded files

DEEPLY CONNECTED APP

 The app interface may vary slightly depending on the updated version.



DOWNLOAD

1 Save video download icon **2** Download information

3 resolution/frame rate and other settings **4** Time settings

SETTING

5 Sound settings **6** ADAS settings **7** EVENT settings

8 System settings **9** Reset to default settings (factory reset)

Using the PC Viewer

- The following provides brief information about the PC VIEWER screen layout.



- ① Front/rear video playback screen
- ② Video controller
- ③ Speed indicator
- ④ G-sensor information
- ⑤ Recording file list
- ⑥ Map
- ⑦ Full-screen (Switch screens (Front / Rear))
- ⑧ Dashcam settings Save the current video
- ⑨ Change language

Using the PC Viewer (MAC)

- The following provides brief information about the PC VIEWER screen layout.



- ① Front/rear video playback screen
- ② Video controller
- ③ Speed indicator
- ④ G-sensor information
- ⑤ Recording file list
- ⑥ Map
- ⑦ Full-screen (Switch screens (Front / Rear))
- ⑧ Dashcam settings
- ⑨ Save the current video

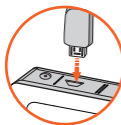
INSTALL



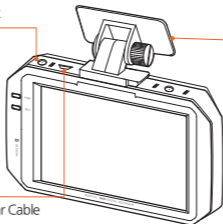
Connect power cable to DC-IN slot



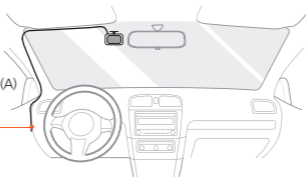
Remove the protective film from the adhesive tapecamera



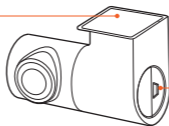
Connect Rear Cable



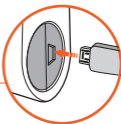
You can connect a rear camera (A) and an indoor IR camera (B) to Y cable A and B respectively.



Remove the protective film from the adhesive tapecamera



Connect Rear Cable



SPECIFICATIONS

SPECIFICATIONS

Product	Deepfly DQ7	Camera	Front : 5.0M CMOS Sensor
LCD	3.5" Touch LCD (IPS)		Rear : 2M Sony STARVIS Sensor
Resolution Frame	Front : QHD 1440p, 30fps Rear : FHD 1080p, 30fps	Angle	Front : 145°, Rear : 145°
		Video	H.264 / PCM
Power	DC 12V ~ 24V	ADAS	LDWS / FVDW / FCWS
Senear	3-Axis Accelerometer G-Sensor	GPS	External GPS
Audio	PCM(Pulse Code Modulation)	Capacity	Micro SD 32GB~256GB
Wi-Fi	External WiFi Doble(2.4GHz)	Temperature	Operation temp: -10° ~ 60°C
Application	Android 6.0, IOS 10.0	PC Viewer	Win7, 8,10 (32Bit / 64Bit)

PACKAGE CONTENTS



Front Camera



Rear Camera



Windshield Mounts



Micro SD Card



Hardwiring Cable



Rear Camera Cable



Quick Guide